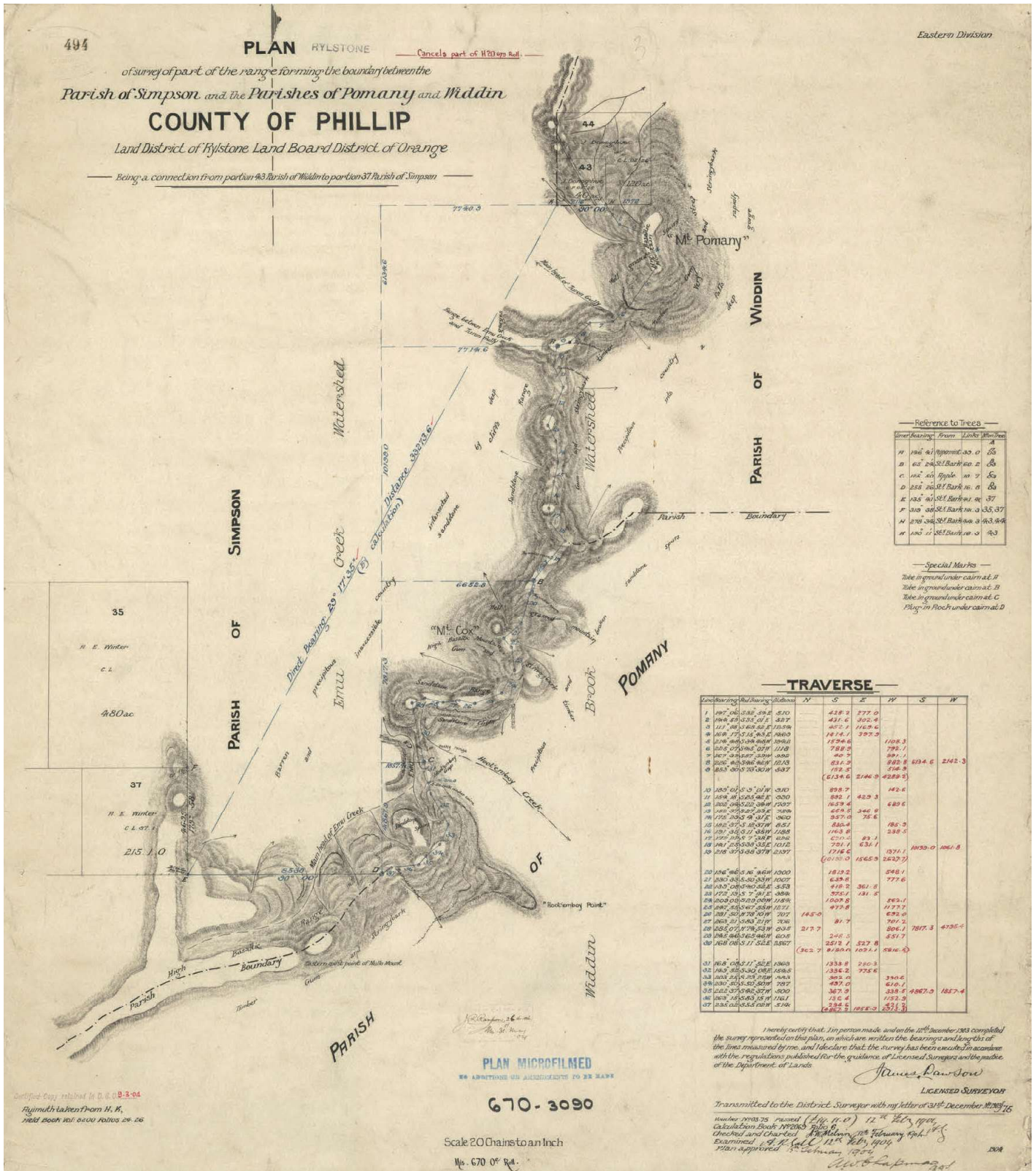


PART 1

ORIGIN OF THE
NAME POMANY



ABOVE: Plan of part of the range (Pomany Range) between Parish of Simpson and the Parishes of Pomany and Widdin. Surveyed, December 1903. Crown Survey Plan 670-3090.

ORIGIN OF THE NAME POMANY

SUMMARY OF SIGNIFICANT FINDINGS

- Mount Pomany was an accepted name in general use in 1829.
- Mount Pomany was first mapped by surveyor Peter Ogilvie in 1833.
- The word Pomany appears on Surveyor General, Thomas Mitchell's Map of the Colony of NSW, 1834.
- There are no minerals of economic value on Mount Pomany.
- The first person to take up an Annual Lease on Mount Pomany was Henry Dewey in 1896.
- The slab hut on Mount Pomany on portion 43 was built by John Donoghue and later transferred to Sydney Freeman then Cecil Bird and later again to his son Paul John Bird. It was transferred by inheritance to Rod Leffley and later sold to the National Parks & Wildlife Service.
- The 80-year-old hut was destroyed by a wildfire in 1985.
- The origin and provenance of the word Pomany both remain unresolved.
- Mount Pomany is located on former Aboriginal trade route, later used by Europeans to access the Widden Valley.
- Most leases and private holdings were extinguished when the Wollemi National Park was declared 14 December 1979.
- Remaining inlier properties are gradually being acquired by the NPWS.

LOCATION

Mount Pomany is located within the Wollemi National Park, 36 km north east of Rylstone. It divides the watersheds of Emu Creek on the west and Widden Creek on the eastern side. Accessed via Nullo Mountain Road, then 7.5 km along East Trail / Nullo Trail and a further off track 12.5 km to Mount Pomany, via Mount Cox.

PHYSICAL DESCRIPTION

Joseph Carne in his *Geology and Mineral Resources of the Western Coalfield* writes, *Surveyor P. G. Ogilvie topographically surveyed most of the principal ranges and mountain peaks between the Colo and Cudgegong, and the Goulburn and Hunter ... In 1833 Ogilvie also mapped Wareng, Popping, Pomany and Nulla (sic Nullo) with intervening ranges.¹ Further Mount Cox ... Occurs on same ridge, and under same conditions as Pomany. Area, about fifteen acres.²*

In describing the mount Carne writes, *Mount Pomany, north of Sheet 14, Parish of Widdin (sic) Widden, County Phillip. On west bank of Widdin Brook. Height, about three thousand seven hundred feet above sea-level. Thickness of basalt on west side, about four hundred and fifty feet. May be a point of eruption; evidence not conclusive.*

Pomany forms the highest and most conspicuous peak on northerly trending ridge between Widdin Brook and Emu Creek.



1. Carne, J.E. *Geology and Mineral Resources of the Western Coalfield*, 1908. NSW Government Printer, pp. 75–76.
2. Carne, J.E. *Geology and Mineral Resources of the Western Coalfield*, 1908. NSW Government Printer, p. 117.

RIGHT: Joseph Edmund Carne, Assistant Government Geologist. Photo: NSW State Library collection.

OPPOSITE PAGE: Open grassland at the top of Mount Pomany, 2009. Photo: John Anderson.

Advantage has been taken of its well-grassed summit and slopes by an enterprising settler as a sheep run. Approachable only by following the water parting from Nullo Mountain on the south, or the Goulburn River on the north. At the head of Hool-em-boy Creek, the width of the ridge permits of a narrow bridle-track only. At this point a small typical volcanic neck occurs.³



Mount Pomany is a basalt capped sandstone mountain and highest point on the Pomany Range that is 1100 m high (Pomany Trig). It rises some 800 m above the Widden Valley floor.⁴ One of the authors has visited the Mount Pomany Trig site and explored the general area on several occasions. The southern gently sloping crest enjoys a sub alpine climate and features a variety of sub alpine plant species. The level area has been used in times past for stock grazing.

Access to Mount Pomany is easiest using an old cattle droving route which extends from Nullo Mountain to Mount Cox and hence north to link with the Myrtle Creek Trail. Bushwalkers (with landholder permission) have found several ways of route to reach the summit from Widden Valley including Donoghue Spur, Prestons Pass, Pomany Staircase and Pomany Creek via Bass Crater.

We also know from our own investigation that there was a constructed road (probably built by Able Harris) suitable for wheeled vehicles known as the Mount Never Never Trail to move his stock to market in Rylstone.

3. Carne, J.E. *Geology and Mineral Resources of the Western Coalfield*, 1908. NSW Government Printer, pp. 126–127.

4. Department of Lands Mount Pomany Topographic Map, 8932-1-S. 1:25,000. GR 483 835.

BACKGROUND

When Governor Thomas Brisbane arrived in the colony and took up duties as Governor, 1 December 1821, some 340,000 acres (137,600 ha) of promised land grants had still to be located and there were many confused permissive occupancies and nebulous promises. Lands were occupied and transferred without legal title, and boundary disputes seemed never ending. Proper survey was essential for a workable policy of alienation to be evolved, and the Ripon regulations of 1831⁵ were made to a large extent possible by the practical development of the policies which Brisbane had implemented.⁶

In 1822 Brisbane issued tickets-of-occupation which enabled land to be immediately occupied without a preliminary survey and graziers to be given security against trespass without the land being permanently alienated.⁷ Additional assistant surveyors were appointed to reduce arrears in the surveying and granting of land, but Brisbane promised land only to those with the inclination and ability to use it productively.

These issues set the stage for a systematic approach to land survey in NSW.

THE POMANY NAME

The earliest record of the use of the name Pomany is to be found in the NSW Magazine of December 1833 in an article titled, “On the Trigonometrical Survey,”⁸

These operations were continued across the northern portion of the colony in June 1829 when Surveyor General was instructed to lay out the Great Road Northward; and in exploring the mountains which the road was to cross, he had the satisfaction to derive the greatest advantage from the distant points thus fixed.

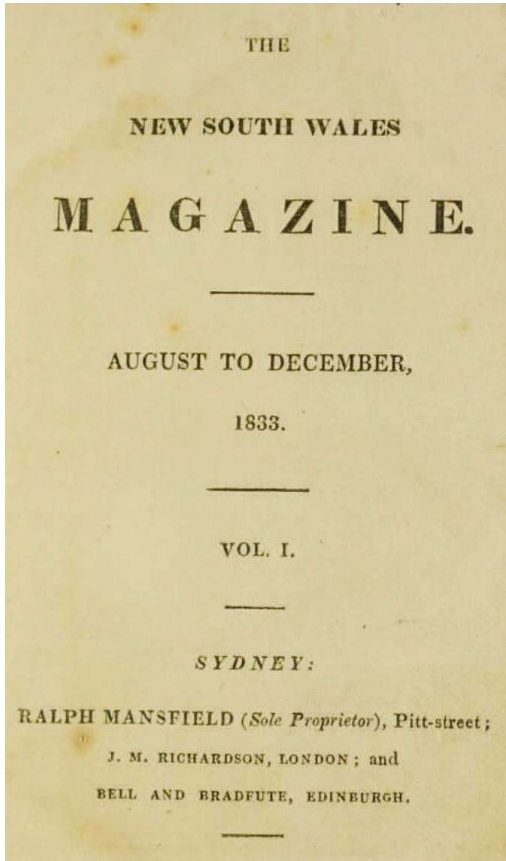
-
5. First Earl of Ripon, and first Viscount Goderich was baptised as Frederick John Robinson, ...he took charge of the Colonial Office on 22 November 1830. This time his influence was felt in eastern Australia by the introduction in January 1831 of the so-called Ripon regulations, whereby the granting of Crown Land within the settled counties was replaced by auction sales at a minimum of 5s. an acre, a change made possible only by the ten preceding years of intensive surveys and valuations... Goderich, first Viscount (1782–1859), Australian Dictionary of Biography, National Centre of Biography, Australian National University, <https://adb.anu.edu.au/biography/goderich-first-viscount-2103/text2654>, published first in hardcopy 1966, accessed online 18 October 2025.
 6. Heydon, J. D. *Sir Thomas Makdougall Brisbane (1773–1860)*, Australian Dictionary of Biography, Volume 1, 1966.
 7. A permit granting permission to colonial European settler in Australia to graze animals on a designated piece of land. Oxford English Dictionary.
 8. *The New South Wales Magazine*, August to December 1833, Vol. 1, pp. 50 and 145.



ABOVE: View of Mount Pomany from Mount Cox. Photo: Roger Caffin.

These were indeed found so essential in the survey necessary to determine the best line for the road, by enabling him to know his position in all places, that his first step was to clear the summit of Warrawolong (which was broad, and covered with enormous trees), and next to complete the series of triangles, by angles observed at that station; and at Kutenbun, the Broken Back, the Yellow Rock, and Wambo which stations were likewise cleared of heavy timber for this purpose, as were also various nameless summits of the ranges.

This series of triangles included Mount Tomah, Mount Hay, Tayan, and Coricudgy, on the western dividing range; Pomany, Monundilla, Yengo, and Wareng, heights of the range between the Rivers Hawkesbury and Hunter; Oxley's Pic, Mount McArthur, Murulla, and many other pics of the Liverpool Range; Mount Royal and the highest parts of the mountains between that range and the sea.



LEFT: Title page *The NSW Magazine* August to December 1833. Photo: National Library, trove.

It has hitherto been conducted with great spirit, perseverance, and success, under the very able and scientific superintendence of Major Mitchell, a gentleman of tried and distinguished ability in such services, and when completed, and exhibited in a map (now in progress of preparation by that officer).

So, in June 1829, the Pomany name was already established. Assistant Surveyor Peter Grant Oglivie was in the vicinity of Mount Pomany, 24 October 1833. It is possible that he camped there. From this location he wrote to his boss, Surveyor General Thomas Mitchell commenting on how arduous conditions were and that it often took a whole day just to replenish his water cans.⁹

9. Surveyors Letters, 1822–1855, NSW Museums of History, INX-35-101 Oglivie Peter Grant microfilm reel 3082, pp. 125–126. The letter of 24 October 1833 just says Pomany. Most other correspondence the location is prefixed by the word Camp which leaves his location open to question.